

—

Catalog of

SPIRAL SUCTION-DELIVERY HOSES

CONTENT:

English / Srpski

FLUID COMPATIBILITY / KOMPATIBILNI FLUIDI — page 2

LEGEND OF SYMBOLS / LEGENDA SIMBOLA — page 3

SPIRAL SUCTION-DELIVERY OF ABRASIVE MATERIALS HOSE / USISNO-POTISNA SPIRALNA CREVA ZA ABRAZIVNE MATERIJALE — page 4

TANK HOSES WITH STEEL HELIX / GUMENA CREVA ZA NAFTU SA ČELIČNOM SPIRALOM — page 5

SPIRAL SUCTION-DELIVERY HOSES FOR FLOW OF BEVERAGES / USISNO-POTISNA CREVA ZA PROTOK PREHRAMBENIH FLUIDA — page 6

SPIRAL SUCTION-DELIVERY WATER HOSE / USISNO-POTISNA SPIRALNA CREVA ZA VODU — page 7

CORRUGATED SUCTION-DELIVERY HOSE FOR WATER WITH EXTERNAL RED PVC HELIX / REBRASITO USISNO-POTISNO CREVO ZA VODU SA SPOLJNOM ZAŠTITOM OD PVC SPIRALE — page 8

SPIRAL SUCTION-DELIVERY EPDM (UHMWPE) FOR CHEMICAL HOSES / SPIRALNA USISNO-POTISNA EPDM (UHMWPE) CREVA ZA HEMIKALIJE — page 9

SPIRAL SUCTION-DELIVERY EPDM FOR CHEMICAL HOSES / SPIRALNA USISNO-POTISNA EPDM CREVA ZA HEMIKALIJE — page 10

FLUID COMPATIBILITY

LEGEND OF SYMBOLS / PREGLED SIMBOLA:

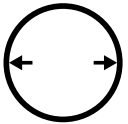
0 = Excellent (odlično) X = Good (dobro) + = Fair (slabo) - = Limited use (ograničena upotreba)

TYPE OF FLUID	GĀ	M	H	T	V2	V3
	DIN 73379	R6	R3, R4, R5	FIS 8204	SAE 100, R1, R2	DIN 2076
Alcohol	x	x	0	0	x	x
Alaun (Kind of clay)	0	0	0	0	0	0
Aluminium chloride	0	0	0	0	0	0
Aluminium-fluoride 20%	0	0	0	0	0	0
Aluminium-sulfate	0	0	0	0	0	0
Hot ammonia gas	+	+	x	0	+	+
Cold ammonia gas	0	0	0	0	0	0
Dry ammonia	-	-	-	-	-	-
Ammonia	0	0	x	0	0	0
Ammonium-chloride	0	0	x	0	0	0
Ammonium-hydroxide	x	x	x	x	x	x
Ammonium-nitrate	0	0	0	0	0	0
Ammonium-phosphate	0	0	0	0	0	0
Ammonium-sulfate	0	0	0	0	0	0
Amyl-alcohol	0	0	0	0	0	0
Amyl-acetate	-	-	-	0	-	-
Aniline (oil)	-	-	+	0	-	-
Anilin (color)	x	x	x	x	x	x
Asphalt	x	x	x	0	x	x
Acetate-solvent	-	-	-	0	-	-
Crude acetate-solvent	-	-	-	0	-	-
Acetone	-	-	-	0	-	-
Acetylene	0	0	x	0	0	0
Crude nitric acid	-	-	-	0	-	-
Nitric acid 10%	-	-	+	0	-	-
Nitric acid 70%	-	-	-	0	-	-
Barium-chloride	0	0	0	0	0	0
Barium hydroxide	0	0	0	x	0	0
Barium-sulfide	0	0	0	0	0	0
Gasoline	0	0	x	0	0	0
Benzol	+	+	-	0	+	+
Borax	0	0	0	0	0	0
Boron acid	0	0	0	0	0	0
Bromine	-	-	-	0	-	-
Bromine acid	-	-	-	0	-	-
Butane	-	-	-	0	-	-
Butanon	-	-	-	0	-	-
Butanol	0	0	0	0	0	0
Butane acetate	-	-	-	-	0	0
Butylene	0	0	+	+	0	0
Copper chloride	x	x	0	0	x	x
Copper sulfate	0	0	0	0	0	0
Zinc chloride	+	+	+	0	+	+
Zinc sulfate	0	0	0	0	0	0
Citron acid	x	x	x	0	x	x
Light engine oil	0	0	+	0	0	0
Dimethanol benzene	+	+	-	0	+	+
Ether	+	+	+	0	+	+
Ethyl alcohol	0	0	0	0	0	0
Ethyl-acetate	-	-	-	0	-	-
Ethyl chloride	-	-	x	0	-	-
Ethil-glicol	-	-	-	0	-	-
Cellulose ethyl	x	x	x	0	x	x
Ethylene dichloride	+	+	-	0	+	+
Ethylene glycol	0	0	0	0	0	0
Ethereat oils	+	+	+	0	+	+
Varnish	-	-	-	0	-	-
Fluorsilicione acid	x	x	x	0	x	x
Hot liquid acid	-	-	-	0	-	-
Cold liquid acid	-	-	-	0	-	-
Formaldehyde	0	0	+	0	0	0
Frygene F-12	-	-	-	-	-	-
Frygene F-13	-	-	-	-	-	-
Frygene F-22	-	-	-	-	-	-
Phurphurate	-	-	+	0	-	-
Phosphoric acid	+	+	+	0	+	+
Iron chloride	0	0	0	0	0	0
Iron sulfate	0	0	0	0	0	0
Iron salts solutions	x	x	x	0	x	x
Glucose	0	0	0	0	0	0
Glcentine	0	0	x	0	0	0
Glycerine, glycerale	0	0	0	0	0	0
Blast furnace gas	-	-	-	0	-	-
Chlorine acetone	-	-	-	0	-	-
Chlorine gas	-	-	-	-	-	-
Chloroform	-	-	-	0	-	-
Chlorine sulfone acid	-	-	-	0	-	-
Chlorine hydrogen	-	-	-	-	-	-
Chloric acid	-	-	-	0	-	-
Heptane	0	0	0	+	0	0
Hexane	0	0	0	+	0	0
Potassium chloride	0	0	0	0	0	0
Potassium hydroxide	+	+	+	0	+	+
Potassium sulfate	0	0	0	0	0	0
Potassium cyanide	0	0	0	0	0	0
Calcium bisulfate	0	0	0	0	0	0
Calcium chloride	0	0	0	0	0	0
Calcium hydroxide	0	0	0	0	0	0
Calcium hypochlorite	-	-	-	0	-	-
Carbolineum	0	0	0	0	0	0
Carbolic acid-phenol	-	-	-	0	-	-
Coke-oven gas	+	+	+	+	+	+
Corn oil	0	0	x	0	0	0
Oxygen	+	+	+	+	+	+
Lacquer	x	x	x	0	x	x
Paste	0	0	0	0	0	0
Linseed oil	0	0	x	0	0	0
Linden oil	-	-	-	0	-	-
Hydraulic oil	0	0	0	0	0	0
Magnesium chloride	0	0	0	0	0	0
Magnesium hydroxide	x	x	x	0	x	x
Magnesium sulfate	0	0	0	0	0	0
Points	-	-	-	0	-	-
Methyl alcohol	0	0	0	0	0	0
Methyl chloride	-	-	-	-	0	-
Methyl isopropil ketone	-	-	-	-	0	-
Milk	x	x	x	x	0	x
Milk acid	+	+	+	0	+	+
Mineral oils	0	0	x	0	0	0
Naphtha	0	0	0	0	0	0
Naphthalene	+	+	+	0	+	+
Sodium bisulfate	0	0	0	0	0	0
Sodium chloride	0	0	0	0	0	0
Sodium hydroxide	+	+	+	0	-	-
Sodium hypochlorite	-	-	-	0	-	-
Sodium carbonate	0	0	0	0	0	0
Sodium metaphosphate	0	0	+	0	0	0
Sodium nitrate	-	-	-	0	-	-
Sodium perbonate	-	-	-	0	-	-
Sodium peroxide	-	-	-	0	-	-
Sodium phosphate	x	x	+	0	x	x
Sodium silicate	0	0	0	0	0	0
Sodium sulfate	0	0	0	0	0	0
Sodium sulfide	+	+	+	+	+	+
Sodium thiosulfate	0	0	0	0	0	0
Natrium cianid	0	0	0	0	0	0
Nickel chloride	0	0	0	0	0	0
Nickel sulfate	0	0	0	0	0	0
Nitrobenzol	-	-	-	0	-	-
Oxalic acids	x	x	x	x	x	x
Beer	+	+	0	0	+	+
Blue acid	-	-	-	0	-	-
Steam	+	+	+	0	+	+
Palmytene acids	0	0	0	0	0	0
Perchlaetylene	-	-	-	0	-	-
Petroleum (Keroseine)	0	0	x	0	0	0
Petroleum (etheral)	x	x	+	0	x	x
Petroleum (of naphtha)	x	x	+	0	x	x
Liquid pycrine acid	+	+	+	0	+	+
Diluted pycrine acid	+	+	+	0	+	+
Pydraul F-9	-	-	-	0	-	-
Pydraul 150	-	-	-	0	-	-
Pydraul 600	-	-	-	0	-	-
Castor oil	0	0	0	0	0	0
Acetic acid	-	-	-	0	-	-
Acetic acid-vapor	x	x	+	0	x	x
Acetic acid-diluted	+	+	+	0	+	+
Acetic acid without water	x	x	x	0	-	-
Crude oil (naphtha)	0	0	0	0	0	0
Co salt acid	-	-	-	0	-	-
Sulfur	x	x	+	0	x	x
Sulfur chloride	+	+	+	+	+	+
Sulfur dioxide	+	+	+	0	+	+
Sulfur trioxide	+	+	+	0	+	+
Warmed sulfuric acids 10%	+	+	+	0	+	+
Cold sulfuric	0	0	0	0	0	0
Hot sulfuric acid 75%	-	-	-	0	-	-
Cold sulfuric acid 75%	+	+	+	0	+	+
Hot sulfuric acid 95%	-	-	-	0	-	-
Cold sulfuric acid 95%	-	-	-	0	-	-
Pure sulfuric acid	-	-	-	0	-	-
Sulfurous acid	+	+	+	0	+	+
Sulfur hydrogen	+	+	x	0	+	+
Liquid soap	0	0	x	0	0	0
Skydrol 500	-	-	-	0	-	-
Skydrol 700	-	-	-	0	-	-
Soybean oil	0	0	x	0	0	0
Salt solutions	0	0	0	0	0	0
Edible vinegar	+	+	+	0	+	+
Stearic acid	x	x	+	0	x	x
Syflne colour-green	0	0	0	0	0	0
Syflne colour-black	0	0	0	0	0	0
Tar	+	+	+	0	+	+
Turpentine	x	x	-	0	x	x
Carbon tetrachloride	+	+	-	0	+	+
Ethylene trichloride	-	-	-	0	-	-
Toluol	-	-	-	0	-	-
Cottonseed oil	0	0	x	0	0	0
Heating oil	0	0	x	0	0	0
Oil acids	x	x	+	0	x	x
Lubricating oil	0	0	x	0	0	0
Carbon dioxide	0	0	0	0	0	0
Carbon disulfide	-	-	-	0	-	-
Dry carbon monoxide	-	-	-	-	-	-
Carbonic acid	0	0	0	0	0	0
Air	0	0	0	0	0	0
Vaseline	0	0	x	0	0	0
Water	0	0	+	0	0	0
Hydrogen	+	+	+	+	+	+
Hydrogen perhydrat	-	-	-	0	-	-
Hydrogen peroxide	x	x	x	0	x	x
Vinous acid	+	+	+	0	+	+
Whiskey and wine	+	+	+	0	+	+
Polluted waters	0	0	x	0	0	0
Natural gas	0	0	0	+	0	0
Warmed air	+	+	+	0	+	+
Gelatin	0	0	0	0	0	0
Quicksilver	0	0	0	0	0	0
Quicksilver chloride	x	x	+	0	x	x
Chilean saltpeter	0	0	0	0	0	0
Impregnation acid	+	+	0	0	+	+
Sugar	0	0	0	0	0	0
Sugar solution	0	0	0	0	0	0

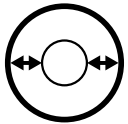
—

Legend of

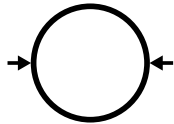
SYMBOLS



INSIDE
DIAMETER



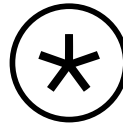
REINFORCEMENT
DIAMETER



OUTSIDE
DIAMETER



WORKING
PRESSURE



BURST
PRESSURE



MINIMUM BEND
RADIUS



WEIGHT

SPIRAL SUCTION-DELIVERY OF ABRASIVE MATERIALS HOSE USISNO-POTISNA SPIRALNA CREVA ZA ABRAZIVNE MATERIJALE

HOSE SIZE VELIČINA CREVA		INSIDE DIAMETER		REINFORCEMENT DIAMETER		OUTSIDE DIAMETER		WORKING PRESSURE		BURST PRESSURE		MINIMUM BEND RADIUS		WEIGHT		CODE/ŠIFRA
		mm	inch	mm	inch	mm	inch	bar	psi	bar	psi	mm	inch	g/m	lb/ft	
DN 35	dash	35	1-3/8"			51		10	150	30	450			1400		UPA-010-032
38		38	1-1/2"			54		10	150	30	450			1550		UPA-010-038
50		50	2"			67		10	150	30	450			2000		UPA-010-050
* 63		63	2-1/2"			81		10	150	30	450			2550		UPA-010-063
* 75		76	3"			93		10	150	30	450			2950		UPA-010-075
** 102		102	4"			122		10	150	30	450			4880		UPA-010-080
** 125		127	5"			150		10	150	30	450			6900		UPA-010-100
** 150		152	6"			172		10	150	30	450			8300		UPA-010-125
** 200		204	8"			226		10	150	30	450			14100		UPA-010-150
** 250		254	10"			279		10	150	30	450			18500		UPA-010-200
																UPA-010-250

* Length maximum L=15m / Maksimalna dužina L=15m

** Length maximum L=30m, customer can choose other diameter, pressure / Maksimalna dužina L=30m, po zahtevu kupca mogu se izraditi drugi prečnici i pritisak.

INFO:

TUBE - Smooth black electrically conductive NR/SBR rubber abrasion resistant 55mm³, according to DIN 53516

REINFORCEMENT - Multiple textile plies with steel wire helix.

COVER - Wrapped black electrically conductive NR/SBR rubber.

MAIN APPLICATIONS TYPES

Suction and discharge of abrasive materials.

RECOMMENDED FLUIDS - For dry or wet abrasive materials.

APPLICABLE SPECS: None applicable.

CONTINUOUS SERVICE: -30°C / +70°C

MAX OPERATING TEMPERATURE: +70°C

INFO:

DONJA GUMA - Glatka, crna, elektroprovodiva NR/SBR visoko abrazivna guma 55mm³, po DIN 53516

OJAČANJE - Više tekstilnih kordova i čelična žica.

OBLOGA - Sa otiskom tekstila, crna, elektroprovodiva, otporna NR/SBR guma.

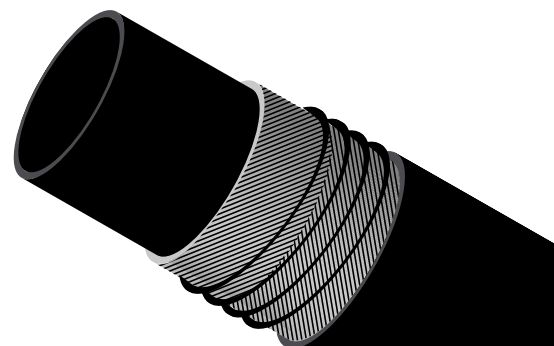
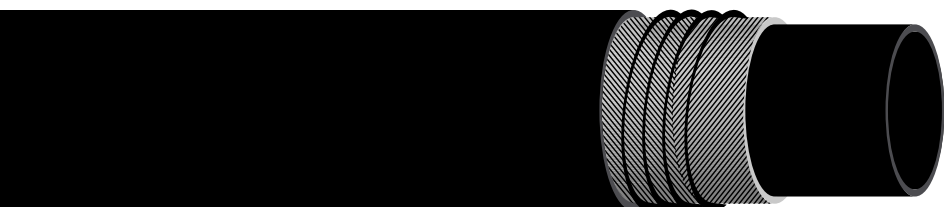
PRIMENA - Niski pritisak, usis, povratni vod, za abrazivne materijale.

PREPORUČENI FLUIDI - Suvi i mokri abrazivni materijali.

STANDARD: Ne definiše industrijski standard.

TEMPERATURNI OPSEG: -30°C / +70°C

MAKSIMALNI TEMPERATURNI OPSEG: +70°C



TANK HOSES WITH STEEL HELIX GUMENA CREVA ZA NAFTU SA ČELIČNOM SPIRALOM

HOSE SIZE VELIČINA CREVA		INSIDE DIAMETER		MAX VACUUM	OUTSIDE DIAMETER		WORKING PRESSURE		BURST PRESSURE		MINIMUM BEND RADIUS		WEIGHT		CODE/ŠIFRA
		mm	inch	bar	mm	inch	bar	psi	bar	psi	mm	inch	g/m	lb/ft	
DN	dash														
19		19	3/4"	0,8	31		20		30		70		800		UPN-020-019
25		25	1"	0,8	37		20		30		80		890		UPN-020-025
32		32	1-1/4"	0,8	44		20		30		90		1150		UPN-020-032
38		38	1-1/2"	0,8	51		20		30		100		1400		UPN-020-038
50		50	2"	0,8	66		20		30		130		2050		UPN-020-050
63		63	2-1/2"	0,8	79		20		30		160		2800		UPN-020-063
75		75	3"	0,8	91		20		30		180		3250		UPN-020-075
80		80	-	0,8	96		20		30		190		3500		UPN-020-080
100		100	4"	0,8	116		16		25		250		4700		UPN-016-100
125		125	5"	0,8	145		16		25		350		7500		UPN-016-125
150		150	6"	0,8	172		16		25		500		9800		UPN-016-150
200		200	8"	0,8	224		16		25		1000		14500		UPN-016-200
250		200	10"	0,8	276		10		15		2000		22800		UPN-010-250

Customer can choose other: diameter, pressure and color / Po zahtevu kupca mogu se izraditi drugi: prečnici, pritisak creva i boje.

INFO:

TUBE - Smooth black quality NBR, conductive no fuel solubility.

REINFORCEMENT - Textile braids and embedded nonkinking galvanised steel helix in the conductive layer.

COVER - Wrapped black non marking rubber chloroprene (CR) black, conductive.

APPLICATIONS - Suitable for use as a suction-discharge hose for all petroleum based products.

Electrical conductivity 10^6ohm

APPLICABLE SPECS: EN 1361; EN 12115

CONTINUOUS SERVICE: -40°C / +100°C

INFO:**DONJA GUMA**

Glatka, crna, NBR provodna guma nerastvorljiva na goriva.

OJAČANJE - Poliester kord i čelična spirala.

OBLOGA - Crna, hloroprenska CR guma.

PRIMENA

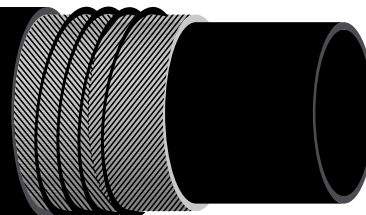
Niski pritisak, usis, povratni vod, za abrazivne materijale.

PREPORUČENI FLUIDI - Suvi i mokri abrazivni materijali.

Elektro provodnost 10^6ohm

STANDARD: EN 1361; EN 12115

TEMPERATURNI OPSEG: -40°C / +100°C



SPIRAL SUCTION-DELIVERY HOSES FOR FLOW OF BEVERAGES USISNO-POTISNA CREVA ZA PROTOK PREHRAMBENIH FLUIDA

HOSE SIZE VELIČINA CREVA		INSIDE DIAMETER		REINFORCEMENT DIAMETER		OUTSIDE DIAMETER		WORKING PRESSURE		BURST PRESSURE		MINIMUM BEND RADIUS		WEIGHT		CODE/ŠIFRA
		mm	inch	mm	inch	mm	inch	bar	psi	bar	psi	mm	inch	g/m	lb/ft	
19			3/4"			31		10		30		50		650		UPP-010-019
22			7/8"			34		10		30		50		700		UPP-010-022
25			1"			37		10		30		55		750		UPP-010-025
28			1-1/8"			40		10		30		65		890		UPP-010-028
32			1-1/4"			44		10		30		70		930		UPP-010-032
35			1-3/8"			49		10		30		75		1150		UPP-010-035
38			1-1/2"			52		10		30		80		1300		UPP-010-038
50			2"			64		10		30		110		1950		UPP-010-050
63			2-1/2"			79		10		30		140		2500		UPP-010-063
* 75			3"			92		10		30		170		2800		UPP-010-075
* 102			3"			122		10		30		220		4700		UPP-010-102

* Length maximum L=15m, customer can choose other diameter, pressure and color / Maksimalna dužina L=15m, po zahtevu kupca mogu se izraditi drugi: prečnici, pritisak i boja.

INFO:

TUBE - Smooth white food quality EPDM rubber.

REINFORCEMENT - Polyester cord and steel wire helix.

COVER - Wrapped orange non marking EPDM rubber.

APPLICATIONS - Suitable for conveying liquid food stuffs, in particular milk and dairy products, animal and vegetable oils and fats. Also for cleaning in dairies, food production plants, hot water and cold water hose.

PAY ATTENTION

TO MEET THE HIGH DEMANDS ASSOCIATED WITH CONTINUOUS STEAM OPERATION WE RECOMMEND UHMWPE.

CONFORMING TO STANDARD: FDA approved materials.

APPLICABLE SPECS: SRPS G.C6.022

CONTINUOUS SERVICE: -40°C / +100°C

MAX OPERATING TEMPERATURE: +120°C

INFO:

DONJA GUMA - Glatka, bela, prehrambena EPDM guma.

OJAČANJE - Poliester kord i čelična žica.

OBLOGA - Narandžasta EPDM guma.

PRIMENA - Pogodno za protok tečnih prehrambenih namirnica, piva, mleka i mlečnih proizvoda, životinjskih i biljnih ulja i masti. Takođe je pogodno crevo za čišćenje u prehrambenoj industriji sa toplom ili hladnom vodom.

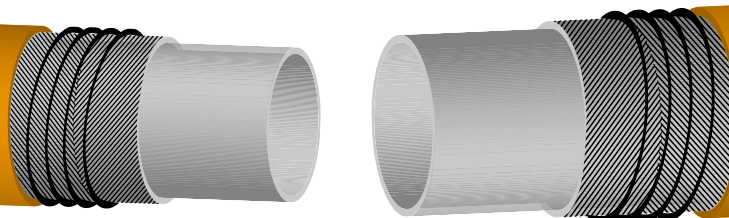
OBRATITE PAŽNJU

DA BI SE ZADOVOLJILI ZAHTEVI ZA KONTINUALNO KORIŠĆENJE VISOKIH TEMPERATURA PREPORUČUJEMO PROIZVODE UHMWPE.

STANDARD: SRPS G.C6.022

MATERIJAL ZADOVOLJAVA: FDA

TEMPERATURNI OPSEG: -40°C / +100°C, ne dugo do 120°C



SPIRAL SUCTION-DELIVERY WATER HOSE USISNO-POTISNA SPIRALNA CREVA ZA VODU

HOSE SIZE VELIČINA CREVA		INSIDE DIAMETER		REINFORCEMENT DIAMETER		OUTSIDE DIAMETER		WORKING PRESSURE		BURST PRESSURE		MINIMUM BEND RADIUS		WEIGHT		CODE/ŠIFRA
		mm	inch	mm	inch	mm	inch	bar	psi	bar	psi	mm	inch	g/m	lb/ft	
DN 28		28	1-1/8"			38		10	150	30	450				830	UPV-010-028
30		31	1-3/16"			41		10	150	30	450				950	UPV-010-030
35		35	1-3/8"			46		10	150	30	450				1110	UPV-010-035
38		38	1-1/2"			49		10	150	30	450				1250	UPV-010-038
50		50	2"			61		10	150	30	450				1550	UPV-010-050
* 63		63	2-1/2"			75		10	150	30	450				2190	UPV-010-063
* 75		76	3"			89		10	150	30	450				3030	UPV-010-075
** 102		102	4"			117		10	150	30	450				4400	UPV-010-102
** 125		127	5"			144		10	150	30	450				6300	UPV-010-125
** 150		152	6"			173		10	150	30	450				9390	UPV-010-150
** 200		204	8"			226		10	150	30	450				14100	UPV-010-200
** 250		254	10"			279		10	150	30	450				18500	UPV-010-250
*** 300		304	12"			332		10	150	30	450				25000	UPV-010-300
*** 350		354	14"			384		10	150	30	450				25000	UPV-010-350

* Lenght maximum L=30m, ** Lenght maximum L=15m, *** Lenght maximum L=10m / Maksimalne dužine: 30m, 15m, 10m

INFO:

TUBE - Water and air resistant synthetic rubber optional EPDM

REINFORCEMENT - Multiple textile plies with stiele wire helix.

COVER - Textile impressed. Environment resistant synthetic rubber, optional EPDM.

MAIN APPLICATIONS TYPES

Low pressure lines, suction, return lines.

RECOMMENDED FLUIDS - Water and air.

APPLICABLE SPECS: SRPS GC6.024

CONTINUOUS SERVICE: -40°C / +80°C

MAX OPERATING TEMPERATURE: +100°C

INFO:

DONJA GUMA - Za protok vode i vazduha, sintetička guma, po izboru može biti EPDM.

OJAČANJE - Više tekstilnih kordova i čelična žica.

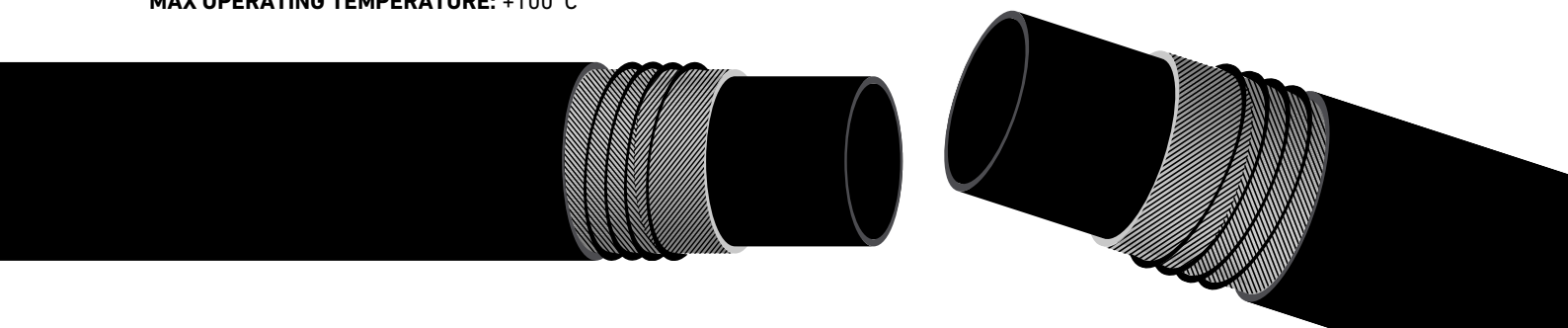
OBLOGA - Sa otiskom tekstila, crna, otporna, sintetička guma, po izboru može biti EPDM.

PRIMENA - Niski pritisak, usis, povratni vod.

PREPORUČENI FLUIDI - Voda i vazduh.

STANDARD: SRPS GC6.024

TEMPERATURNI OPSEG: -40°C / +80°C, maksimum +100°C



CORRUGATED SUCTION-DELIVERY HOSE FOR WATER WITH EXTERNAL RED PVC HELIX / REBRASTO USISNO-POTISNO CREVO ZA VODU SA SPOLJNOM ZAŠTITOM OD PVC SPIRALE

HOSE SIZE VELIČINA CREVA		← →		← →		→ ←		bar		✱		⤿		⚠		CODE/ŠIFRA
		INSIDE DIAMETER		REINFORCEMENT DIAMETER		OUTSIDE DIAMETER		WORKING PRESSURE		BURST PRESSURE		MINIMUM BEND RADIUS		WEIGHT		
DN	dash	mm	inch	mm	inch	mm	inch	bar	psi	bar	psi	mm	inch	g/m	lb/ft	
51		50,8	2"			76,2	3"	7				101,6		1350		UPVCV-7-51
76		76,2	3"			101,6	4"	7				152,4		1975		UPVCV-7-76
102		101,6	4"			127	5"	7				203,2		2595		UPVCV-7-102
152		152,4	6"			177,8	7"	5				304,8		3835		UPVCV-5-152

Customer can choose other: diameter, pressure and color / Po zahtevu kupca mogu se izraditi drugi: prečnici, pritisak creva i boje.

INFO:

TUBE - Black SBR rubber.

COVER - External PVC helix. Color option: white or by request.

RECOMMENDED FLUIDS - Water and air.

TEMPERATURE RANGE: -30°C / +70°C

DESIGN FACTOR: -2,5:1

INFO:

DONJA GUMA - Crna SBR guma.

OBLOGA - PVC spirala spolja. Izbor boje: bela ili po zahtevu.

PREPORUČENE TEČNOSTI - Voda i vazduh.

TEMPERATURNI OPSEG: -30°C / +70°C

FAKTOR SIGURNOSTI: -2,5:1



SPIRAL SUCTION-DELIVERY EPDM (UHMWPE) FOR CHEMICAL HOSES SPIRALNA USISNO-POTISNA EPDM (UHMWPE) CREVA ZA HEMIKALIJE

HOSE SIZE VELIČINA CREVA		INSIDE DIAMETER		REINFORCEMENT DIAMETER		OUTSIDE DIAMETER		WORKING PRESSURE		BURST PRESSURE		MINIMUM BEND RADIUS		WEIGHT		CODE/ŠIFRA
		mm	inch	mm	inch	mm	inch	bar	psi	bar	psi	mm	inch	g/m	lb/ft	
19			3/4"			31		10		30		50		650		UPHPE10-019
22			7/8"			34		10		30		50		700		UPHPE10-022
25			1"			37		10		30		55		750		UPHPE10-025
28			1-1/8"			40		10		30		65		890		UPHPE10-028
32			1-1/4"			44		10		30		70		930		UPHPE10-032
35			1-3/8"			49		10		30		75		1150		UPHPE10-035
38			1-1/2"			52		10		30		80		1300		UPHPE10-038
50			2"			64		10		30		110		1950		UPHPE10-050
63			2-1/2"			79		10		30		140		2500		UPHPE10-063
* 75			3"			92		10		30		170		2800		UPHPE10-075
* 102			3"			122		10		30		220		4700		UPHPE10-102

* Length maximum L=15m, customer can choose other diameter, pressure and color / Maksimalna dužina L=15m, po zahtevu kupca mogu se izraditi drugi: prečnici, pritisak i boja.

INFO:

TUBE - UHMWPE, smooth black quality EPDM rubber.

REINFORCEMENT - Polyester cord and steel wire helix.

COVER - Wrapped black non marking EPDM rubber.

APPLICATIONS - Designed to handle approximately 98% of commonly used acids, chemicals and solvents.

APPLICABLE SPECS: EN 12115; SRPS G.C6.027

CONTINUOUS SERVICE: -40°C / +125°C

ATTENTION:

THE TEMPERATURE OF THE MEDIUM MUST BE LOWER THAN IT'S BOILING POINT.

PLEASE REFER TO THE PRIMA RESISTANCE LIST OR, IN CASE OF DOUBT, CONTACT PRIMA HOSE.

INFO:

DONJA GUMA - UHMWPE, glatka, crna, kvalitetna EPDM guma,

OJAČANJE - Poliester kord i spiralna čelična žica.

OBLOGA - Sa otiskom tekstila EPDM guma.

PRIMENA - Napravljeno da odgovara zahtevima za 98% najčešće korišćenih kiselina, hemikalija i rastvarača.

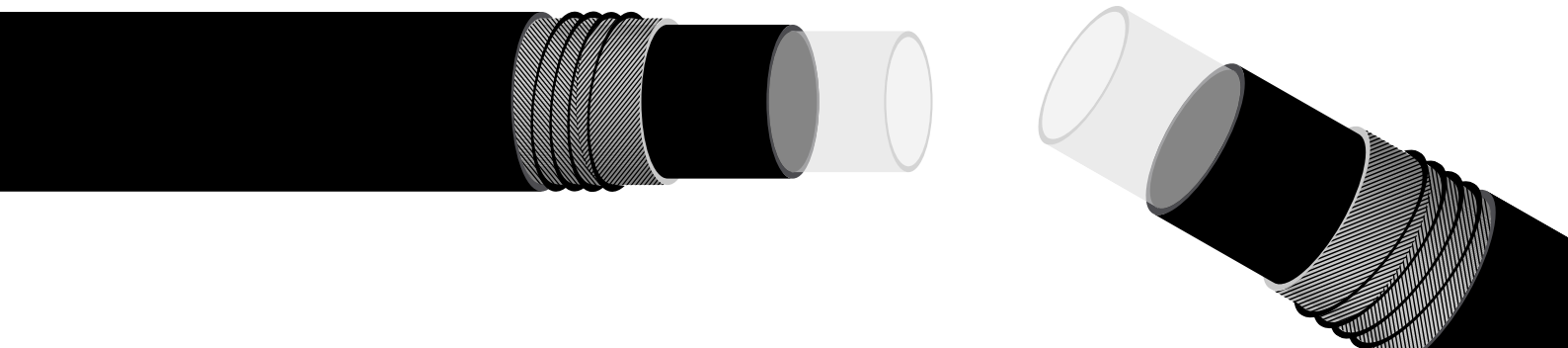
STANDARD: EN 12115; SRPS G.C6.027

TEMPERATURNI OPSEG: -40°C / +125°C

PAŽNJA:

TEMPERATURA MEDIJA MORA BITI NIŽA OD NJEGOVE TAČKE KLJUČANJA.

UKOLIKO IMATE DILEMU PRI KORIŠĆENJU POGLEDajte LISTU OT-PORNOSTI KOJA JE PRILOŽENA U LISTU KATALOGA PRIMA HOSE.



SPIRAL SUCTION-DELIVERY EPDM FOR CHEMICAL HOSES SPIRALNA USISNO-POTISNA EPDM CREVA ZA HEMIKALIJE

HOSE SIZE VELIČINA CREVA		INSIDE DIAMETER		REINFORCEMENT DIAMETER		OUTSIDE DIAMETER		WORKING PRESSURE		BURST PRESSURE		MINIMUM BEND RADIUS		WEIGHT		CODE/ŠIFRA
		mm	inch	mm	inch	mm	inch	bar	psi	bar	psi	mm	inch	g/m	lb/ft	
19			3/4"			31		10		30		50		650		UPH010-019
22			7/8"			34		10		30		50		700		UPH010-022
25			1"			37		10		30		55		750		UPH010-025
28			1-1/8"			40		10		30		65		890		UPH010-028
32			1-1/4"			44		10		30		70		930		UPH010-032
35			1-3/8"			49		10		30		75		1150		UPH010-035
38			1-1/2"			52		10		30		80		1300		UPH010-038
50			2"			64		10		30		110		1950		UPH010-050
63			2-1/2"			79		10		30		140		2500		UPH010-063
* 75			3"			92		10		30		170		2800		UPH010-075
* 102			4"			122		10		30		220		4700		UPH010-102

* Length maximum L=15m, customer can choose other diameter, pressure and color / Maksimalna dužina L=15m, po zahtevu kupca mogu se izraditi drugi: prečnici, pritisak i boja.

INFO:

TUBE - Smooth black quality EPDM rubber.

REINFORCEMENT - Polyester cord and steel wire helix.

COVER - Wrapped black non marking EPDM rubber.

APPLICATIONS - Suitable for use as a and discharge hose in the chemical industry.

PAY ATTENTION

TO MEET THE HIGH DEMANDS REGARDING THE CONTINUOUS FLOW OF SOME CHEMICALS WE RECOMMEND UHMWPE.

APPLICABLE SPECS: EN 12115; SRPS G.C6.

CONTINUOUS SERVICE: -40°C /+100°C, maximum +120°C

ATTENTION:

THE TEMPERATURE OF THE MEDIUM MUST BE LOWER THAN IT'S BOILING POINT.

PLEASE REFER TO THE PRIMA RESISTANCE LIST OR, IN CASE OF DOUBT, CONTACT PRIMA HOSE.

INFO:

DONJA GUMA - Glatka, crna, kvalitetna EPDM guma.

OJAČANJE - Tekstilni oplit po potrebi.

OBLOGA - Sa otiskom tekstila, crna EPDM guma.

PRIMENA - Pogodno za upotrebu kao usisno-potisno crevo u hemiskoj industriji.

OBRTITI PAŽNJU:

DA BI SE ZADOVOLJILI ZAHTEVI ZA KONTINUALNO KORIŠĆENJE VISOKIH TEMPERATURA PREPORUČUJEMO PROIZVODE UHMWPE.

STANDARD: EN 12115; SRPS G.C6

TEMPERATURNI OPSEG: -40°C /+100°C, maximum +120°C

PAŽNJA:

TEMPERATURA MEDIJA MORA BITI NIŽA OD NJEGOVE TAČKE KLJUČANJA.

UKOLIKO IMATE DILEMU PRI KORIŠĆENJU POGLEDajte LISTU OT-PORNOSTI KOJA JE PRILOŽENA U LISTU KATALOGA PRIMA HOSE.

