

—

Catalog of

# HOSES FOR TECHNICAL GASSES

## CONTENT:

*English / Srpski*

**FLUID COMPATIBILITY / KOMPATIBILNI FLUIDI — page 2**

LEGEND OF SYMBOLS / LEGENDA SIMBOLA — page 3

WELDING HOSE - ACETYLENE / CREVO ZA ZAVARIVANJE - ACETILEN — page 4

WELDING HOSE - OXIGENE / CREVO ZA ZAVARIVANJE - OKSIGEN — page 5

FREON SAE J 2064, TYPE-B, CLASS I / FREON SAE J 2064, TIP-B, KLASA I — page 6

AIR CONDITIONING HOSE, SAE J 2064, TYPE-C / CREVO ZA KLIMA UREĐAJE, TIP-C — page 7

COMPRESSED NATURAL GAS & LIQUEFIED PETROLEUM GAS / KOMPRESOVANI PRIRODNI GAS I TEČNI NAFTNI GAS — page 8

COMPRESSED NATURAL GAS & LIQUEFIED PETROLEUM GAS ECE 110 CLASS 1 / KOMPRESOVANI PRIRODNI GAS I TEČNI NAFTNI GAS ECE 110 CLASS 1 — page 9

# FLUID COMPATIBILITY

## LEGEND OF SYMBOLS / PREGLED SIMBOLA:

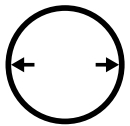
0 = Excellent (odlično) X = Good (dobro) + = Fair (slabo) - = Limited use (ograničena upotreba)

TYPE OF FLUID	GĀ	M	H	T	V2	V3
	DIN 73379	R6	R3, R4, R5	FIS 8204	SAE 100, R1, R2	DIN 2076
Alcohol	x	x	0	0	x	x
Alaun (Kind of clay)	0	0	0	0	0	0
Aluminium chloride	0	0	0	0	0	0
Aluminium-fluoride 20%	0	0	0	0	0	0
Aluminium-sulfate	0	0	0	0	0	0
Hot ammonia gas	+	+	x	0	+	+
Cold ammonia gas	0	0	0	0	0	0
Dry ammonia	-	-	-	-	-	-
Ammonia	0	0	x	0	0	0
Ammonium-chloride	0	0	x	0	0	0
Ammonium-hydroxide	x	x	x	x	x	x
Ammonium-nitrate	0	0	0	0	0	0
Ammonium-phosphate	0	0	0	0	0	0
Ammonium-sulfate	0	0	0	0	0	0
Amyl-alcohol	0	0	0	0	0	0
Amyl-acetate	-	-	-	0	-	-
Aniline (oil)	-	-	+	0	-	-
Anilin (color)	x	x	x	x	x	x
Asphalt	x	x	x	0	x	x
Acetate-solvent	-	-	-	0	-	-
Crude acetate-solvent	-	-	-	0	-	-
Acetone	-	-	-	0	-	-
Acetylene	0	0	x	0	0	0
Crude nitric acid	-	-	-	0	-	-
Nitric acid 10%	-	-	+	0	-	-
Nitric acid 70%	-	-	-	0	-	-
Barium-chloride	0	0	0	0	0	0
Barium hydroxide	0	0	0	x	0	0
Barium-sulfide	0	0	0	0	0	0
Gasoline	0	0	x	0	0	0
Benzol	+	+	-	0	+	+
Borax	0	0	0	0	0	0
Boron acid	0	0	0	0	0	0
Bromine	-	-	-	0	-	-
Bromine acid	-	-	-	0	-	-
Butane	-	-	-	0	-	-
Butanon	-	-	-	0	-	-
Butanol	0	0	0	0	0	0
Butane acetate	-	-	-	-	0	0
Butylene	0	0	+	+	0	0
Copper chloride	x	x	0	0	x	x
Copper sulfate	0	0	0	0	0	0
Zinc chloride	+	+	+	0	+	+
Zinc sulfate	0	0	0	0	0	0
Citron acid	x	x	x	0	x	x
Light engine oil	0	0	+	0	0	0
Dimethanol benzene	+	+	-	0	+	+
Ether	+	+	+	0	+	+
Ethyl alcohol	0	0	0	0	0	0
Ethyl-acetate	-	-	-	0	-	-
Ethyl chloride	-	-	x	0	-	-
Ethil-glicol	-	-	-	0	-	-
Cellulose ethyl	x	x	x	0	x	x
Ethylene dichloride	+	+	-	0	+	+
Ethylene glycol	0	0	0	0	0	0
Ethereat oils	+	+	+	0	+	+
Varnish	-	-	-	0	-	-
Fluorsilicione acid	x	x	x	0	x	x
Hot liquid acid	-	-	-	0	-	-
Cold liquid acid	-	-	-	0	-	-
Formaldehyde	0	0	+	0	0	0
Frygene F-12	-	-	-	-	-	-
Frygene F-13	-	-	-	-	-	-
Frygene F-22	-	-	-	-	-	-
Phurphurate	-	-	+	0	-	-
Phosphoric acid	+	+	+	0	+	+
Iron chloride	0	0	0	0	0	0
Iron sulfate	0	0	0	0	0	0
Iron salts solutions	x	x	x	0	x	x
Glucose	0	0	0	0	0	0
Glcentine	0	0	x	0	0	0
Glycerine, glycerale	0	0	0	0	0	0
Blast furnace gas	-	-	-	0	-	-
Chlorine acetone	-	-	-	0	-	-
Chlorine gas	-	-	-	-	-	-
Chloroform	-	-	-	0	-	-
Chlorine sulfone acid	-	-	-	0	-	-
Chlorine hydrogen	-	-	-	-	-	-
Chloric acid	-	-	-	0	-	-
Heptane	0	0	0	+	0	0
Hexane	0	0	0	+	0	0
Potassium chloride	0	0	0	0	0	0
Potassium hydroxide	+	+	+	0	+	+
Potassium sulfate	0	0	0	0	0	0
Potassium cyanide	0	0	0	0	0	0
Calcium bisulfate	0	0	0	0	0	0
Calcium chloride	0	0	0	0	0	0
Calcium hydroxide	0	0	0	0	0	0
Calcium hypochlorite	-	-	-	0	-	-
Carbolineum	0	0	0	0	0	0
Carbolic acid-phenol	-	-	-	0	-	-
Coke-oven gas	+	+	+	+	+	+
Corn oil	0	0	x	0	0	0
Oxygen	+	+	+	+	+	+
Lacquer	x	x	x	0	x	x
Paste	0	0	0	0	0	0
Linseed oil	0	0	x	0	0	0
Linden oil	-	-	-	0	-	-
Hydraulic oil	0	0	0	0	0	0
Magnesium chloride	0	0	0	0	0	0
Magnesium hydroxide	x	x	x	0	x	x
Magnesium sulfate	0	0	0	0	0	0
Points	-	-	-	0	-	-
Methyl alcohol	0	0	0	0	0	0
Methyl chloride	-	-	-	-	0	-
Methyl isopropil ketone	-	-	-	-	0	-
Milk	x	x	x	x	0	x
Milk acid	+	+	+	0	+	+
Mineral oils	0	0	x	0	0	0
Naphtha	0	0	0	0	0	0
Naphthalene	+	+	+	0	+	+
Sodium bisulfate	0	0	0	0	0	0
Sodium chloride	0	0	0	0	0	0
Sodium hydroxide	+	+	+	0	-	-
Sodium hypochlorite	-	-	-	0	-	-
Sodium carbonate	0	0	0	0	0	0
Sodium metaphosphate	0	0	+	0	0	0
Sodium nitrate	-	-	-	0	-	-
Sodium perbonate	-	-	-	0	-	-
Sodium peroxide	-	-	-	0	-	-
Sodium phosphate	x	x	+	0	x	x
Sodium silicate	0	0	0	0	0	0
Sodium sulfate	0	0	0	0	0	0
Sodium sulfide	+	+	+	+	+	+
Sodium thiosulfate	0	0	0	0	0	0
Natrium cianid	0	0	0	0	0	0
Nickel chloride	0	0	0	0	0	0
Nickel sulfate	0	0	0	0	0	0
Nitrobenzol	-	-	-	0	-	-
Oxalic acids	x	x	x	x	x	x
Beer	+	+	0	0	+	+
Blue acid	-	-	-	0	-	-
Steam	+	+	+	0	+	+
Palmytene acids	0	0	0	0	0	0
Perchlaretylene	-	-	-	0	-	-
Petroleum (Keroseine)	0	0	x	0	0	0
Petroleum (etheral)	x	x	+	0	x	x
Petroleum (of naphtha)	x	x	+	0	x	x
Liquid pycrine acid	+	+	+	0	+	+
Diluted pycrine acid	+	+	+	0	+	+
Pydraul F-9	-	-	-	0	-	-
Pydraul 150	-	-	-	0	-	-
Pydraul 600	-	-	-	0	-	-
Castor oil	0	0	0	0	0	0
Acetic acid	-	-	-	0	-	-
Acetic acid-vapor	x	x	+	0	x	x
Acetic acid-diluted	+	+	+	0	+	+
Acetic acid without water	x	x	x	0	-	-
Crude oil (naphtha)	0	0	0	0	0	0
Co salt acid	-	-	-	0	-	-
Sulfur	x	x	+	0	x	x
Sulfur chloride	+	+	+	+	+	+
Sulfur dioxide	+	+	+	0	+	+
Sulfur trioxide	+	+	+	0	+	+
Warmed sulfuric acids 10%	+	+	+	0	+	+
Cold sulfuric	0	0	0	0	0	0
Hot sulfuric acid 75%	-	-	-	0	-	-
Cold sulfuric acid 75%	+	+	+	0	+	+
Hot sulfuric acid 95%	-	-	-	0	-	-
Cold sulfuric acid 95%	-	-	-	0	-	-
Pure sulfuric acid	-	-	-	0	-	-
Sulfurous acid	+	+	+	0	+	+
Sulfur hydrogen	+	+	x	0	+	+
Liquid soap	0	0	x	0	0	0
Skydrol 500	-	-	-	0	-	-
Skydrol 700	-	-	-	0	-	-
Soybean oil	0	0	x	0	0	0
Salt solutions	0	0	0	0	0	0
Edible vinegar	+	+	+	0	+	+
Stearic acid	x	x	+	0	x	x
Syflne colour-green	0	0	0	0	0	0
Syflne colour-black	0	0	0	0	0	0
Tar	+	+	+	0	+	+
Turpentine	x	x	-	0	x	x
Carbon tetrachloride	+	+	-	0	+	+
Ethyl chloride	-	-	-	0	-	-
Toluol	-	-	-	0	-	-
Cottonseed oil	0	0	x	0	0	0
Heating oil	0	0	x	0	0	0
Oil acids	x	x	+	0	x	x
Lubricating oil	0	0	x	0	0	0
Carbon dioxide	0	0	0	0	0	0
Carbon disulfide	-	-	-	0	-	-
Dry carbon monoxide	-	-	-	-	-	-
Carbonic acid	0	0	0	0	0	0
Air	0	0	0	0	0	0
Vaseline	0	0	x	0	0	0
Water	0	0	+	0	0	0
Hydrogen	+	+	+	+	+	+
Hydrogen perhydrat	-	-	-	0	-	-
Hydrogen peroxide	x	x	x	0	x	x
Vinous acid	+	+	+	0	+	+
Whiskey and wine	+	+	+	0	+	+
Polluted waters	0	0	x	0	0	0
Natural gas	0	0	0	+	0	0
Warmed air	+	+	+	0	+	+
Gelatin	0	0	0	0	0	0
Quicksilver	0	0	0	0	0	0
Quicksilver chloride	x	x	+	0	x	x
Chilean saltpeter	0	0	0	0	0	0
Impregnation acid	+	+	0	0	+	+
Sugar	0	0	0	0	0	0
Sugar solution	0	0	0	0	0	0

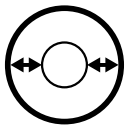
—

Legend of

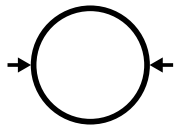
# SYMBOLS



INSIDE  
DIAMETER



REINFORCEMENT  
DIAMETER



OUTSIDE  
DIAMETER



WORKING  
PRESSURE



BURST  
PRESSURE



MINIMUM BEND  
RADIUS



WEIGHT

## WELDING HOSE - ACETYLENE / CREVO ZA ZAVARIVANJE - ACETILEN

HOSE SIZE VELIČINA CREVA		INSIDE DIAMETER		REINFORCEMENT DIAMETER		OUTSIDE DIAMETER		WORKING PRESSURE		BURST PRESSURE		MINIMUM BEND RADIUS		WEIGHT		CODE/ŠIFRA
		DN	dash	mm	inch	mm	inch	mm	inch	bar	psi	bar	psi	mm	inch	
4						11		20		60				110		VAC-020-004
6			1/4"			13		20		60				140		VAC-020-006
6			1/4"			15		20		60				190		VAC-020-007
8			5/16"			15		20		60				160		VAC-020-008
8			5/16"			16		20		60				200		VAC-020-009
10			3/8"			17		20		60				210		VAC-020-010
13			1/2"			21		20		60				280		VAC-020-013
16			5/8"			25		20		60				380		VAC-020-016
19			3/4"			28		20		60				450		VAC-020-019
22						31		20		60				510		VAC-020-022
25			1"			35		20		60				650		VAC-020-025

Customer can choose other: diameter, pressure and color / Po zahtevu kupca mogu se izraditi drugi: prečnici, pritisak creva i boje.

### INFO:

**TUBE** - Smooth black extruded EPDM rubber.

**REINFORCEMENT** - Polyester cord.

**COVER** - Textile impressed. Red EPDM rubber.

### MAIN APPLICATIONS TYPES

Low pressure lines (not suitable for LPG, MPS and CNG).

**APPLICATIONS** - A flexible hose for transporting acetylene.

**SAFETY FACTOR:** 3:1

### APPLICABLE SPECS:

EN ISO 3821:2008; (formerly EN 559:2003).

**CONTINUOUS SERVICE:** -40°C / +80°C

### ATTENTION:

PLEASE USE CORRECT HOSE FITTINGS. WE CAN ADVISE YOU.  
DO NOT SWAGE ON FITTINGS!

### INFO:

**DONJA GUMA** - Glatka ekstrudirana crna EPDM guma.

**OJAČANJE** - Poliesterski kord.

**OBLOGA** - Sa otiskom tekstila, crvena EPDM guma.

**PRIMENA** - Fleksibilna creva za protok acetilena.

Linije niskog pritiska (nije pogodno za LPG, MPS ili CNG).

**FAKTOR SIGURNOSTI:** 3:1

**STANDARD:** EN ISO 3821:2008; (ranije EN 559:2003).

**TEMPERATURNI OPSEG:** -40°C / +80°C

### PAŽNJA:

MOLIMO VAS DA ZA SPAJANJE CREVA KORISTITE ODGOVARAJUĆE  
PRIKLJUČKE. MOŽEMO VAM DATI KORISTAN SAVET.



## WELDING HOSE - OXIGENE / CREVO ZA ZAVARIVANJE - KISEONIK

HOSE SIZE VELIČINA CREVA		← →		→ ←		← → ←		bar		✱		⤿		⚠		CODE/ŠIFRA
		INSIDE DIAMETER		REINFORCEMENT DIAMETER		OUTSIDE DIAMETER		WORKING PRESSURE		BURST PRESSURE		MINIMUM BEND RADIUS		WEIGHT		
DN	dash	mm	inch	mm	inch	mm	inch	bar	psi	bar	psi	mm	inch	g/m	lb/ft	
4						11		20		60				110		VOX-020-004
6			1/4"			13		20		60				140		VOX-020-006
6			1/4"			15		20		60				190		VOX-020-007
8			5/16"			15		20		60				160		VOX-020-008
8			5/16"			16		20		60				200		VOX-020-009
10			3/8"			17		20		60				210		VOX-020-010
13			1/2"			21		20		60				280		VOX-020-013
16			5/8"			25		20		60				380		VOX-020-016
19			3/4"			28		20		60				450		VOX-020-019
22						31		20		60				510		VOX-020-022
25			1"			35		20		60				650		VOX-020-025

Customer can choose other: diameter, pressure and color / Po zahtevu kupca mogu se izraditi drugi: prečnici, pritisak creva i boje.

### INFO:

**TUBE** - Smooth black extruded EPDM rubber.

**REINFORCEMENT** - Polyester cord.

**COVER** - Textile impressed. Blue EPDM rubber.

### MAIN APPLICATIONS TYPES

Low pressure lines (not suitable for LPG, MPS and CNG).

**APPLICATIONS** - A flexible hose for transporting acetylene.

**SAFETY FACTOR:** 3:1

### APPLICABLE SPECS:

EN ISO 3821:2008; (formerly EN 559:2003).

**CONTINUOUS SERVICE:** -40°C / +80°C

### ATTENTION:

PLEASE USE CORRECT HOSE FITTINGS. WE CAN ADVISE YOU.  
DO NOT SWAGE ON FITTINGS!

### INFO:

**DONJA GUMA** - Glatka ekstrudirana crna EPDM guma.

**OJAČANJE** - Poliesterski kord.

**OBLOGA** - Sa otiskom tekstila, plava EPDM guma.

**PRIMENA** - Fleksibilna creva za protok kiseonika.  
Vodovi niskog pritiska (nije pogodno za LPG, MPS ili CNG).

**FAKTOR SIGURNOSTI:** 3:1

**STANDARD:** EN ISO 3821:2008; (ranije EN 559:2003).

**TEMPERATURNI OPSEG:** -40°C / +80°C

### PAŽNJA:

MOLIMO VAS DA ZA SPAJANJE CREVA KORISTITE ODGOVARAJUĆE  
PRIKLJUČKE. MOŽEMO VAM DATI KORISTAN SAVET.



## FREON SAE J 2064, TYPE-B, CLASS I FREON SAE J 2064, TIP-B, KLASA I

HOSE SIZE VELIČINA CREVA		INSIDE DIAMETER		REINFORCEMENT DIAMETER		OUTSIDE DIAMETER		WORKING PRESSURE		BURST PRESSURE		MINIMUM BEND RADIUS		WEIGHT		CODE/ŠIFRA
		mm	inch	mm	inch	mm	inch	bar	psi	bar	psi	mm	inch	g/m	lb/ft	
5	-4	4,8	3/16"			13,2	0,520	35	508	175	2537	76	30	240	0,161	FRB-095-005
6	-5	6,3	1/4"			14,7	0,578	35	508	175	2537	90	35	275	0,185	FRB-035-006
8	-6	7,9	5/16"			17,2	0,677	35	508	175	2537	100	39	340	0,228	FRB-035-008
10	-8	10,3	13/32"			19,3	0,760	35	508	175	2537	120	47	415	0,278	FRB-035-010
13	-10	12,7	1/2"			23,4	0,921	35	508	175	2537	140	55	560	0,375	FRB-035-013
16	-12	15,9	5/8"			27,4	1,079	35	508	175	2537	170	67	695	0,466	FRB-035-016
19	-14	19,0	3/4"			28,8	1,133	35	508	175	2537	180	70	700	0,469	FRB-035-019
22	-16	22,2	7/8"			31,2	1,228	35	508	175	2537	200	79	710	0,476	FRB-035-022
25	-18	25,4	1"			35,4	1,393	35	508	175	2537	250	98	850	0,570	FRB-035-025
28	-20	28,8	1-1/8"			38,4	1,512	35	508	175	2537	300	118	890	0,597	FRB-035-028
30	-22	30,5	1-1/4"			41,5	1,633	35	508	175	2537	350	137	1050	0,704	FRB-035-031

Customer can choose other: diameter, pressure and color / Po zahtevu kupca mogu se izraditi drugi: prečnici, pritisak creva i boje.

**INFO:**

**TUBE** - Freon resistant butyl rubber.

**REINFORCEMENT** - One braid steel wire.

**COVER** - Textile impressed. Environment resistant CSM rubber.

**MAIN APPLICATIONS TYPES**

Low pressure lines, return lines.

**RECOMMENDED FLUIDS:** Freon R 134 a

**APPLICABLE SPECS:** SAE J 2064 TYPE B, CLASS I

**CONTINUOUS SERVICE:** -35°C / +125°C

**MAX OPERATING TEMPERATURE:** +135°C

**INFO:**

**DONJA GUMA** - Guma butil otporna na freon.

**OJAČANJE** - Jedan oplit čelične žice.

**OBLOGA**

Sa otiskom tekstila CSM guma otporna na spoljne uticaje.

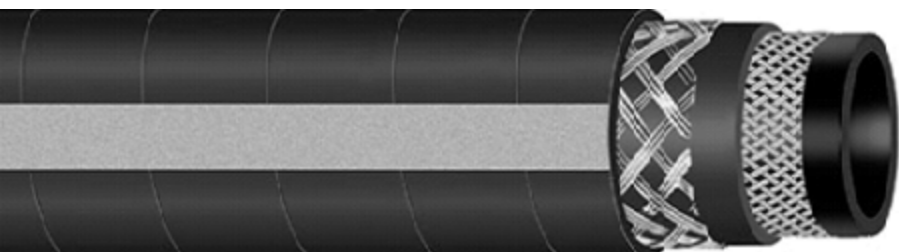
**PRIMENA** - Vodovi niskog pritiska, povratni vodovi.

**PREPORUČENE TEČNOSTI** - Freon 134a

**STANDARD:** SAE J 2064 TIP B, CLASS I

**TEMPERATURNI OPSEG:** -35°C / +125°C

**MAKSIMALNA TEMPERATURA:** +135°C



## AIR CONDITIONING HOSE, SAE J 2064, TYPE-C CREVO ZA KLIMA UREĐAJE, SAE J 2064, TIP-C

HOSE SIZE VELIČINA CREVA		INSIDE DIAMETER		REINFORCEMENT DIAMETER		OUTSIDE DIAMETER		WORKING PRESSURE		BURST PRESSURE		MINIMUM BEND RADIUS		WEIGHT		CODE/ŠIFRA
		mm	inch	mm	inch	mm	inch	bar	psi	bar	psi	mm	inch	g/m	lb/ft	
DN	dash															
4		5	3/16"			11,7		35	500	140		25		140		FRC-035-005
8		8	5/16"			15,7		35	500	140		40		180		FRC-035-008
10		11	13/32"			18,8		35	500	140		50		250		FRC-035-010
13		12,7	1/2"			21,1		35	500	140		65		270		FRC-035-012
16		16	5/8"			24,4		35	500	140		80		340		FRC-035-016

Customer can choose other: diameter, pressure and color / Po zahtevu kupca mogu se izraditi drugi: prečnici, pritisak creva i boje.

**INFO:**

**TUBE** - Smooth black extruded sintetic rubber.

**REINFORCEMENT** - Polyester cord.

**COVER** - Textile impressed. Black CSM rubber, pin picked.

**MAIN APPLICATIONS TYPES** - Low pressure.

**APPLICATION:** A flexible hose for transporting freon, R-134a, R-22, R-404, R-407, R-134a, R-22, R-404, R-407

**SAFETY FACTOR:** 4:1

**APPLICABLE SPECS:** SAE J2064 TYPE C

**CONTINUOUS SERVICE:** -40°C / +125°C

**ATTENTION:**

PLEASE USE CORRECT HOSE FITTINGS. WE CAN ADVISE YOU.  
DO NOT SWAGE ON FITTINGS!

**INFO:**

**DONJA GUMA** - Glatka ekstrudirana crna butil guma.

**OJAČANJE** - Poliesterski kord.

**OBLOGA** - Sa otiskom tekstila, perforirana, crna CSM guma, perforirana.

**PRIMENA**

Niski pritisak. Fleksibilna creva za protok freona, R-134a

**FAKTOR SIGURNOSTI:** 4:1

**STANDARD:** SAE J2064 TIP C

**TEMPERATURNI OPSEG:** -40°C / +125°C

**PAŽNJA:**

MOLIMO VAS DA ZA SPAJANJE CREVA KORISTITE ODGOVARAJUĆE PRIKLJUČKE. MOŽEMO VAM DATI KORISTAN SAVET.



## COMPRESSED NATURAL GAS & LIQUEFIED PETROLEUM GAS KOMPRESOVANI PRIRODNI GAS I TEČNI NAFTNI GAS

HOSE SIZE VELIČINA CREVA		INSIDE DIAMETER		REINFORCEMENT DIAMETER		OUTSIDE DIAMETER		WORKING PRESSURE		BURST PRESSURE		MINIMUM BEND RADIUS		WEIGHT		CODE/ŠIFRA
		mm	inch	mm	inch	mm	inch	bar	psi	bar	psi	mm	inch	g/m	lb/ft	
DN	dash															
5		4,8	3/16"			13		25	360	100		50		200		TNG-025-005
6		6,4	1/4"			15,5		25	360	100		65		225		TNG-025-006
8		8	5/16"			17,6		25	360	100		75		270		TNG-025-008
10		9,5	3/8"			19,1		25	360	100		90		300		TNG-025-010
13		12,7	1/2"			23,8		25	360	100		115		450		TNG-025-013
16		15,8	5/8"			27,7		25	360	100		130		580		TNG-025-016
19		19	3/4"			31,8		25	360	100		160		730		TNG-025-019
25		25	1"			38,1		25	360	100		190		900		TNG-025-025

Customer can choose other: diameter, pressure and color / Po zahtevu kupca mogu se izraditi drugi: prečnici, pritisak creva i boje.

### INFO:

**TUBE** - Smooth black extruded nitrile rubber.

**REINFORCEMENT** - Multiple textile piles.

**COVER** - Textile impressed. Black wrapped pin picked chloroprene rubber.

**APPLICATION:** Liquefied petroleum gas (LPG), compressed natural gas (CNG),

**APPLICABLE SPECS:** CGA TYPE III, ECE 67.01 CLASS 2/LPG

**CONTINUOUS SERVICE:** -40°C, maximum +125°C

### ATTENTION:

PLEASE USE CORRECT HOSE FITTINGS. WE CAN ADVISE YOU. DO NOT SWAGE ON FITTINGS!

THE APPLICATION MUST BE IN A WELL-VENTILATED ENVIRONMENT: SIGNIFICANT CONTINUOUS AIR MOVEMENT. OUTDOORS, OR INDOORS WITH SIGNIFICANT CONTINUOUS AIR MOVEMENT.

### INFO:

**DONJA GUMA** - Glatka ekstrudirana crna nitrilna guma.

**OJAČANJE** - Više tekstilnih oplita po potrebi.

### OBLOGA

Sa otiskom tekstila crna hloroprenska guma perforirana.

### PRIMENA

Tečni naftni gas (LPG), kompresovani prirodni gas (CNG).

**STANDARD:** CGA TYPE III, ECE 67.01 CLASS 2/LPG

**TEMPERATURNI OPSEG:** -40°C / +125°C

### PAŽNJA:

MOLIMO VAS DA ZA SPAJANJE CREVA KORISTITE ODGOVARAJUĆE PRIKLJUČKE. MOŽEMO VAM DATI KORISTAN SAVET.

PRIMENA MORA BITI U DOBRO PROVETRENOM PROSTORU SA IZRAZITOM I STALNOM RAZMENOM VAZDUHA IZRAZITOG I STALNOG VAZDUŠNOG STRUJANJA.





## COMPRESSED NATURAL GAS & LIQUEFIED PETROLEUM GAS ECE 110 CLASS 1 KOMPRESOVANI PRIRODNI GAS I TEČNI NAFTNI GAS ECE 110 CLASS 1

HOSE SIZE VELIČINA CREVA		INSIDE DIAMETER		REINFORCEMENT DIAMETER		OUTSIDE DIAMETER		WORKING PRESSURE		BURST PRESSURE		MINIMUM BEND RADIUS		WEIGHT		CODE/ŠIFRA
		mm	inch	mm	inch	mm	inch	bar	psi	bar	psi	mm	inch	g/m	lb/ft	
DN	dash															
8		8	5/16"			17,6		30		120		100		240		TNG-030-008
10		9,5	3/8"			19,5		30		120		90		250		TNG-030-010
13		12,7	1/2"			23,8		30		120		140		420		TNG-030-013
16		15,8	5/8"			26,8		30		120		165		450		TNG-030-016

Customer can choose other: diameter, pressure and color / Po zahtevu kupca mogu se izraditi drugi: prečnici, pritisak creva i boje.

**INFO:**

**TUBE** - Smooth black extruded nitrile rubber.

**REINFORCEMENT** - One steel braid.

**COVER** - Textile impressed. Black wrapped pin picked chloroprene rubber.

**APPLICATION:** Liquefied petroleum gas (LPG), compressed natural gas (CNG).

**APPLICABLE SPECS:** CGA TYPE III, ECE 110 CLASS 1/LPG

**CONTINUOUS SERVICE:** -40°C, maximum +125°C

**ATTENTION:**

PLEASE USE CORRECT HOSE FITTINGS. WE CAN ADVISE YOU. DO NOT SWAGE ON FITTINGS!  
THE APPLICATION MUST BE IN A WELL-VENTILATED ENVIRONMENT: SIGNIFICANT CONTINUOUS AIR MOVEMENT. OUTDOORS, OR INDOORS WITH SIGNIFICANT CONTINUOUS AIR MOVEMENT.

**INFO:**

**DONJA GUMA** - Glatka ekstrudirana crna nitrilna guma.

**OJAČANJE** - Jedan žičani oplit.

**OBLOGA**

Sa otiskom tekstila crna hloroprenska guma perforirana.

**PRIMENA**

Tečni naftni gas (LPG), kompresovani prirodni gas (CNG).

**STANDARD:** CGA TYPE III, ECE 110 CLASS 1/LPG

**TEMPERATURNI OPSEG:** -40°C / +125°C

**PAŽNJA:**

MOLIMO VAS DA ZA SPAJANJE CREVA KORISTITE ODGOVARAJUĆE PRIKLJUČKE. MOŽEMO VAM DATI KORISTAN SAVET.  
PRIMENA MORA BITI U DOBRO PROVETRENOM PROSTORU SA IZRAZITOM I STALNOM RAZMENOM VAZDUHA IZRAZITOG I STALNOG VAZDUŠNOG STRUJANJA.

